

Datasheet **FIBER DUCTING**



Fiber Ducting solution -



Characteristics

- Halogen free, RoHS compliant
- UV light-resistant
- Flame-retardant UL94/V0
- Provides 100 % lateral support for fibers
- Radius protected guiding elements
- Secure and enclosed protection of fibers
- Tool-less assembly
- Compatible with all major brands
- Resistant to electrical interference
- No grounding needed
- No specific tool set or skill set required
- Quick and easy expansion of network
- Accurate cable length calculations
- Reduced operational failures and downtime
- Faster traceability of circuits
- Prolonged protection of fibers in disaster situations

Protecting your investment

The Bel Stewart fiber containment solution can be installed underfloor or overhead and provides a secure and stress-free routing channel for fiber optic cabling within a data center. Curved fittings such as crosspieces, tees and elbows are specifically designed to protect fibers so that a minimum bend radius of 30 mm is maintained at all times.

Components of the system include straight channels, horizontal and vertical drop-offs and non-intrusive «over-the-top exits» to equipment cabinets. Additionally, all of the necessary mounting brackets and accessories are available to provide a fast and trouble-free installation. Protective covers can also be added to individual components if a higher degree of protection is required.

Lateral support and bend radius protection

Unlike conventional cable baskets and ladders, our fiber containment solution offers lateral support along the complete fiber length. This reduces the risk of macro-bending and micro-bending of the individual cables.

Easy installation

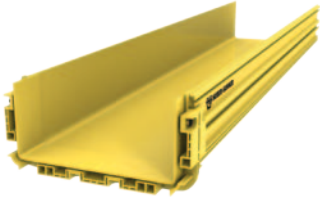
The modular design of the Bel Stewart fiber containment solution helps planners to meet the immediate capacity requirements of today without compromising the expansion needs of tomorrow. Straight channels, curved fittings and inter-connect components can easily be connected with standard joiners that require no special tooling or training.

In addition, our fiber containment solution is compatible with all other major brands and can easily be adapted to fit different environments and architectures.

Fast installation

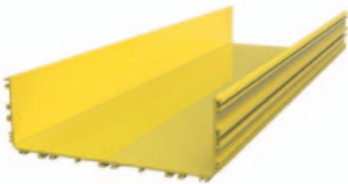
In order to reduce installation times and simplify the complete assembly process, Bel Stewart supply all duct components pre-assembled with joiners. This unique feature can reduce installation times by as much as 50 % and reduces a lot of the complexity involved in connecting straight ducts of different lengths to other components. Because a straight duct always requires at least one joiner, we assemble this in the factory so that full-length ducts can be connected in the fastest possible time. We also pre-fit the screws on the unmated side of the joiner to further improve handling and reduce installation times

Main ducts and covers



Order code main ducts

Description	Item no.
Main duct (incl. 1 joiner and screws) 100 × 100 × 2000	85029745
Main duct (incl. 1 joiner and screws) 160 × 100 × 2000	85029747
Main duct (incl. 1 joiner and screws) 220 × 100 × 2000	85029748
Main duct (incl. 1 joiner and screws) 300 × 100 × 2000	85029749



Order code main ducts

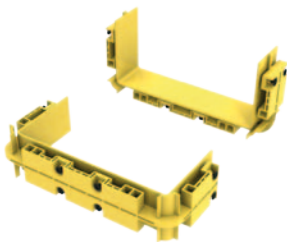
Description	Item no.
Main duct 100 × 100 × 2000	84107786
Main duct 160 × 100 × 2000	84107785
Main duct 220 × 100 × 2000	84107784
Main duct 300 × 100 × 2000	84107783



Order code covers

Description	Item no.
Duct cover (incl. clips) 100 × 2000	85029751
Duct cover (incl. clips) 160 × 2000	85029752
Duct cover (incl. clips) 220 × 2000	85029753
Duct cover (incl. clips) 300 × 2000	85029754

Joiners and end caps



Order code joiners

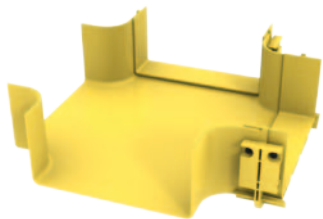
Description	Item no.
Joiner (incl. screws) 100 × 100	84107835
Joiner (incl. screws) 160 × 100	84107834
Joiner (incl. screws) 220 × 100	84107833
Joiner (incl. screws) 300 × 100	84107832



Order code end caps

Description	Item no.
End cap 100 × 100	84107847
End cap 160 × 100	84107846
End cap 220 × 100	84107845
End cap 300 × 100	84107844

Horizontal crosses and covers



Order code horizontal crosses

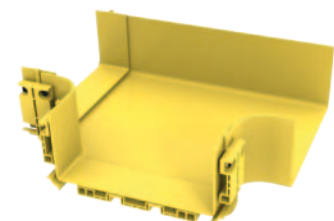
Description	Item no.
Horizontal cross (incl. 2 joiners and screws) 100 × 100	85029759
Horizontal cross (incl. 2 joiners and screws) 160 × 100	85029760
Horizontal cross (incl. 2 joiners and screws) 220 × 100	85029761
Horizontal cross (incl. 2 joiners and screws) 300 × 100	85029762



Order code horizontal cross covers

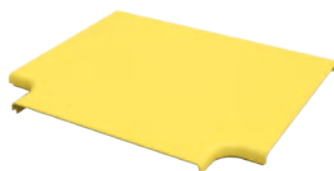
Description	Item no.
Horizontal cross cover 100	84108097
Horizontal cross cover 160	84108096
Horizontal cross cover 220	84108095
Horizontal cross cover 300	84108094

Horizontal tees and covers



Order code horizontal tees

Description	Item no.
Horizontal tee (incl. 2 joiners and screws) 100 x 100	85029764
Horizontal tee (incl. 2 joiners and screws) 160 x 100	85029765
Horizontal tee (incl. 2 joiners and screws) 220 x 100	85029766
Horizontal tee (incl. 2 joiners and screws) 300 x 100	85029767



Order code horizontal tee covers

Description	Item no.
Horizontal tee cover 100	84117259
Horizontal tee cover 160	84117258
Horizontal tee cover 220	84117257
Horizontal tee cover 300	84117256

Horizontal elbows and covers



Order code horizontal elbows 90°

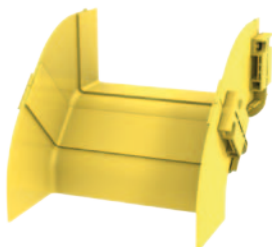
Description	Item no.
Horizontal elbow 90° (incl. 1 joiner and screws) 100 × 100	85029769
Horizontal elbow 90° (incl. 1 joiner and screws) 160 × 100	85029770
Horizontal elbow 90° (incl. 1 joiner and screws) 220 × 100	85029771
Horizontal elbow 90° (incl. 1 joiner and screws) 300 × 100	85029772



Order code horizontal elbow covers 90°

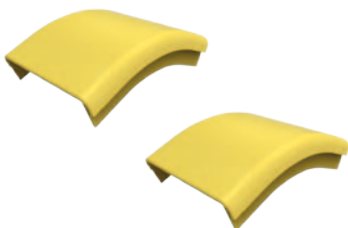
Description	Item no.
Horizontal elbow cover 90° 100	84117268
Horizontal elbow cover 90° 160	84117265
Horizontal elbow cover 90° 220	84117263
Horizontal elbow cover 90° 300	84117261

Vertical down elbows and covers



Order code vertical down elbow 90°

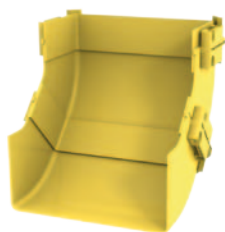
Description	Item no.
Vertical down elbow 90° (incl. 1 joiner and screws) 100 × 100	85029789
Vertical down elbow 90° (incl. 1 joiner and screws) 160 × 100	85029790
Vertical down elbow 90° (incl. 1 joiner and screws) 220 × 100	85029791
Vertical down elbow 90° (incl. 1 joiner and screws) 300 × 100	85029792



Order code vertical down elbow cover 90°

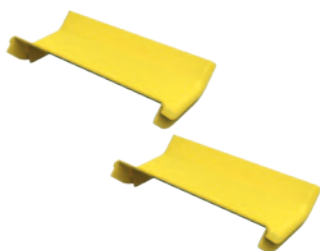
Description	Item no.
Vertical down elbow cover 90° 100	84117298
Vertical down elbow cover 90° 160	84117297
Vertical down elbow cover 90° 220	84117296
Vertical down elbow cover 90° 300	84117295

Vertical up elbows and covers



Order code vertical up elbow 90°

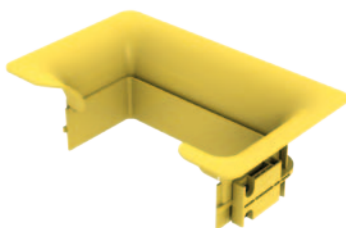
Description	Item no.
Vertical up elbow 90° (incl. 1 joiner and screws) 100 × 100	85029794
Vertical up elbow 90° (incl. 1 joiner and screws) 160 × 100	85029795
Vertical up elbow 90° (incl. 1 joiner and screws) 220 × 100	85029796
Vertical up elbow 90° (incl. 1 joiner and screws) 300 × 100	85029797



Order code vertical up elbow cover 90°

Description	Item no.
Vertical up elbow cover 90° 100	84117308
Vertical up elbow cover 90° 160	84117307
Vertical up elbow cover 90° 220	84117306
Vertical up elbow cover 90° 300	84117305

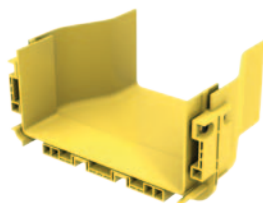
Trumpet outlets



Order code trumpet outlets

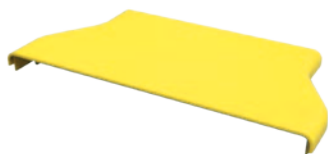
Description	Item no.
Trumpet outlet (incl. 1 joiner and screws) 100 × 100	85029784
Trumpet outlet (incl. 1 joiner and screws) 160 × 100	85029785
Trumpet outlet (incl. 1 joiner and screws) 220 × 100	85029786
Trumpet outlet (incl. 1 joiner and screws) 300 × 100	85029787

Reducers and covers



Order code reducers

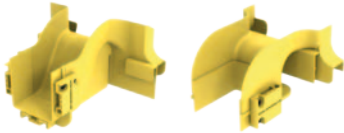
Description	Item no.
Reducer (incl. 1 joiner and screws) 160 x 100	85029801
Reducer (incl. 1 joiner and screws) 220 x 100	85029802
Reducer (incl. 1 joiner and screws) 300 x 100	85029803



Order code reducer covers

Description	Item no.
Reducer cover 160	84117319
Reducer cover 220	84117320
Reducer cover 300	84117322

Top outlet drop-offs and covers



Order code top outlet drop-offs

Description	Item no.
Top outlet drop-off horizontal (incl. 1 joiner and screws) 100×100	85029798
Top outlet drop-off vertical (incl. 1 joiner and screws) 100×100	85029799



Order code top outlet drop-off covers

Description	Item no.
Top outlet drop-off cover horizontal 100	84117315
Top outlet drop-off cover vertical 100	84117316

Top outlet mounting brackets, horizontal and vertical



Order code top outlet mounting brackets

Description	Item no.
Top outlet mounting bracket, horizontal	84107849
Top outlet mounting bracket, vertical	85005492

Mounting material



Order code duct fixing bolt

Description	Item no.
Duct fixing bolt	84107837